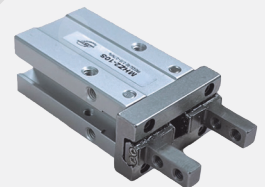
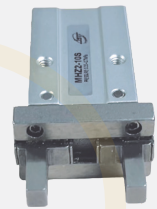


# Angular Type Air Gripper/Standard Type MHZ2 Series

ø10 ø16



## Specifications

Fluid			Air
Operating pressure	Single acting	Normally open	ø10: 0.35 to 0.7 MPa ø16: 0.25 to 0.7 MPa
Ambient and fluid temperature			-10 to 60°C
Repeatability			ø10 to ø16: ±1 mm
Max. operating frequency			ø10 to ø16: 180 c.p.m.
Lubrication			Not required
Action			Single acting
Auto switch (Option)			Solid state auto switch (3-wire, 2-wire)

Model	Bore size (mm)	Gripping force <sup>Note (1)</sup>		Opening/closing stroke (Both sides) (mm)	Weight (g) <sup>Note (2)</sup>
		Gripping force per finger Effective value (N)			
		External			
MHZ2-10S	10	7.1		4	55
MHZ2-16S	16	27		6	115

Note 1) Values based on pressure of 0.5 MPa, gripping point L = 20 mm, at center of stroke.

Note 2) Values excluding weight of auto switch.